

### How will I get my results?

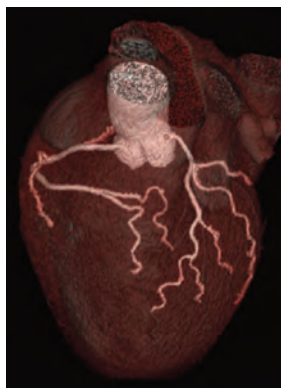
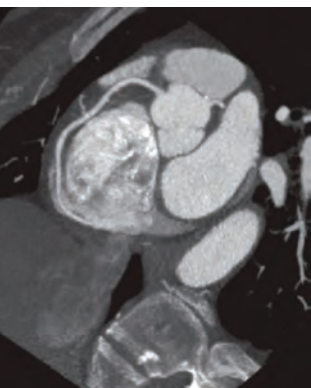
We will send the results to the doctor who referred you for the scan.

### Can I bring a relative or friend with me?

- Yes but they will only be allowed to go into the examination room in special circumstances (for safety reasons).
- Children will not be allowed into the room while you are having the scan so you need to make arrangements for them before you come to your appointment.

### Contacting us

It is very important to us that you have been given all the necessary information so that your scan is carried out successfully. Please contact us on the number given in your appointment letter if you have any questions, concerns or suggestions.

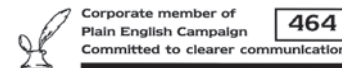


### Further information

If you have any other questions you can ask your GP, the doctor that sent you for the test or the CT department. You can also find further information at the following website: [www.rcr.ac.uk/patients](http://www.rcr.ac.uk/patients)

# CT Coronary Angiography (CTCA)

## Patient Guide



### Alliance Medical

Iceni Centre, Warwick Technology Park, Warwick CV34 6DA  
Tel: 01926 482000 [www.alliancemedical.co.uk](http://www.alliancemedical.co.uk)

## What is a CTCA scan and what are the benefits?

A CT (computerised tomography) scan is an X-ray test that allows us to take detailed images of the body. A CTCA scan gives detailed pictures of your heart and coronary arteries which allows us to see any narrowing or blockages. These pictures help us to make a diagnosis or assess any health problems which helps your doctor to decide the best treatment for you.

## How is a CT coronary angiography scan carried out?

- A member of staff will ask you to lie on the scanning bed. We will place ECG stickers on your chest to record your heart rhythm. This is so we can trigger the scanner to take a picture at a certain point during your heartbeat.
- If your heart rate is high, you may be given an injection of medication called a beta blocker to reduce it for the scan. Please try to avoid driving or cycling to or from your appointment as the medication can make you drowsy. It is a good idea to ask someone to come with you to the appointment.



- We may also give you another medicine in the form of a spray, under your tongue just before the scan. This is to open up the arteries in the heart as much as possible to make it easier to assess them on the scan. You might get a slight headache or feel a little dizzy from this.
- When carrying out the scan we will give you an injection of x-ray dye, so that we can see your heart and arteries clearly. It contains iodine and is not radioactive. Although side effects are rare, during the injection you may experience a warm feeling all over or a metallic taste in your mouth.
- To help us get a clear picture of your heart, we will ask you to hold your breath for no more than 15 seconds for each of the scans we need to undertake.
- While obtaining these pictures of your heart and arteries, the bed may move through the centre of the scanner.

## How long will the scan take?

The scan itself will take less than 3 seconds, but you will be lying on the CT table, in total for around 15 minutes as we have to prepare for the scan and have to give you medication as previously described. Please be prepared to stay over an hour within the department.

## How should I prepare for the scan?

- You can eat as normal and should continue to take your medication as prescribed. Please bring a list of your current medication. However if you have diabetes and are taking metformin, you should contact the CT department in advance of your scan.
- If you are asthmatic and use an inhaler, please bring it with you to your appointment.
- **Most importantly please arrive in plenty of time for your appointment.**

## Is there a risk to me from the radiation used in the scan?

- The scanner has been designed to the highest standards of radiation safety and the lowest possible amount of radiation is always used to perform your CTCA scan. We are exposed to natural background radiation all the time and this test is equivalent to one year's worth of natural background radiation.
- We aim to make sure that every patient fully understands the risks and benefits of the procedure. Please ask if you have any questions.
- Please also let us know if you are pregnant.

